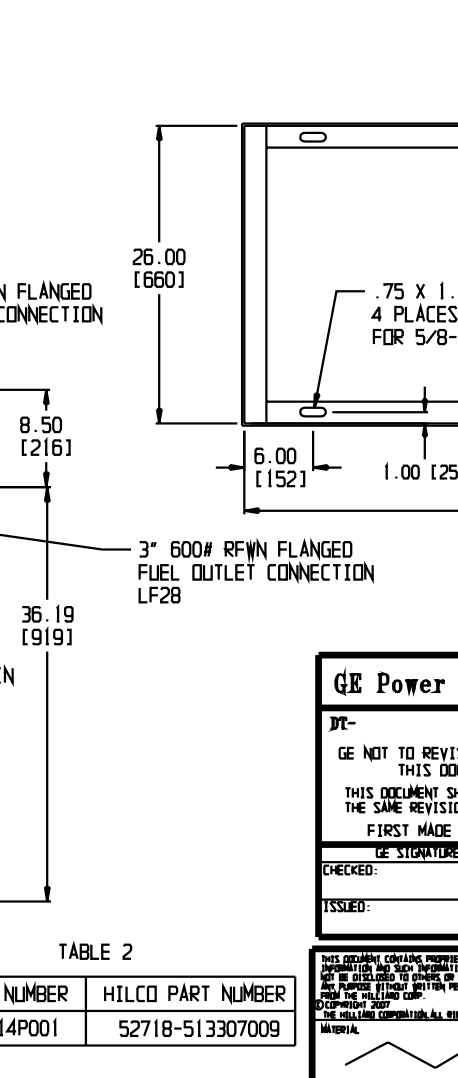


MAXIMUM ALLOWABLE PRESSURE AT DESIGNATED TEMPERATURE

PSI [KG/CM ²]	°F [°C]
1320 [91]	150 [66]
1200 [82]	200 [93]
1140 [78]	250 [121]

TABLE 1



ITEM	PART NUMBER	QTY.	DESCRIPTION
1	0391-00-489-T	2	O-RING (BUNA-N)
2	1051-04-017-C	12	FILTER CARTRIDGE, GE 306A4541P004 (NOTE7)
3	C-030B-600W-002	1	TRANSFER VALVE, GE 351A9968P003
4	0502-16-001-A	1	1/8" DRIFICE FITTING
5	0385-00-086-B	1	POSITIVE HOLD DOWN CAP

MAX. DESIGN PRESSURE: SEE CHART
 MAX. DESIGN TEMPERATURE: SEE CHART
 MIN. DESIGN METAL TEMP.: -20°F/-28°C AT 1330 PSI [92 KG/CM²]
 APPROX. DRY WEIGHT: 2000 LBS [908 KG]
 APPROX. WET WEIGHT: 2250 LBS [1021 KG]
 APPROX. COVER WEIGHT: 152 LBS [68.9 KG]

- NOTES:
1. FILTERS ONLY BUILT TO ASME CODE, SECTION VIII, DIV.1.
 2. MATERIAL OF CONSTRUCTION:
 FILTER HOUSINGS: 304/304L S.S.
 HARDWARE: ZINC PLATED CARBON STEEL
 ENCLOSURE AND BASE ASSEMBLY: PAINTED CARBON STEEL
 VALVE:
 BODY - 304 STAINLESS STEEL
 SHAFT - 316 STAINLESS STEEL
 PADS - 316 STAINLESS STEEL
 3. MAX. ALLOWABLE NOZZLE LOAD IS 50 LBS (22.6 KG) IN ANY DIRECTION. CONNECTING PIPING MUST BE SUPPORTED.
 4. HEAD ROOM REQUIRED FOR CARTRIDGE REMOVAL: 18" (457) FOR CARTRIDGES WITH INTEGRAL CENTER TUBES.
 5. EACH FILTER HOUSING TAKES THREE (3) ELEMENTS. ONE SET OF SPARE ELEMENTS (ITEM 2) AND GASKETS (ITEM 1) INCLUDED.
 6. DIMENSIONS ARE IN INCHES, UNLESS OTHERWISE SPECIFIED. DIMENSIONS IN BRACKETS ARE IN MILLIMETERS.
 7. CABLES, TURNBUCKLES, SPREADER BARS AND ANCHOR SHACKLES ARE NOT SUPPLIED BY G.E. THEY MUST BE SUPPLIED BY THE PLANT DESIGNER AND/OR PLANT INSTALLER.

GE Power Generation GENERAL ELECTRIC COMPANY
Schenectady, NY

DR- VENDOR SUPPLIED DRAWING

GE NOT TO REVISE. GE REVISION LEVEL IS AS SHOWN ABOVE ON THIS APPLIQUE. THIS DOCUMENT IS FILED UNDER THE GE DRAWING NUMBER.

THIS DOCUMENT SHALL BE REVISED IN ITS ENTIRETY. ALL SHEETS OF THIS DOCUMENT ARE THE SAME REVISION LEVEL AS INDICATED IN THIS VENDOR SUPPLIED DRAWING APPLIQUE.

FIRST MADE FOR: ML-7A1PEA330-178 GR1138 E040VDS

CHECKED: [Signature] DATE: [Date] GE DRAWING NUMBER: 219D3804 REV: [Date]

ISSUED: [Signature]

THIS DOCUMENT CONTAINS PROPRIETARY INFORMATION AND SUCH INFORMATION MAY NOT BE DISCLOSED TO OTHERS OR COPIED, REPRODUCED, OR TRANSMITTED IN ANY FORM OR BY ANY MEANS, ELECTRONIC OR MECHANICAL, INCLUDING PHOTOCOPYING, RECORDING, OR BY ANY INFORMATION STORAGE AND RETRIEVAL SYSTEM, WITHOUT THE WRITTEN PERMISSION OF THE WILLIAMS COMPANY.

UNLESS OTHERWISE SPECIFIED: ALL DIMENSIONS ARE IN INCHES. DIMENSIONS IN BRACKETS ARE IN MILLIMETERS.

DATE: 4/19/07
 DRAWN: BGR
 CHECKED: BGR
 APPROVED: BGR
 SIMILAR TO: 5133-07-005-D
 SCALE: 1/8"

REV.	DESCRIPTION	BY	DATE	APP.
E	1. REMOVED CODE NAMEPLATE	LEY	09/08	RF
D	2. REVISED PRESSURE TABLE	LEY	09/08	RF
C	1. ADDED	LEY	03/08	RF
B	2. REMOVED P/N 216A5908P001	LEY	03/08	RF
A	3. ADDED TABLE 2	LEY	03/08	RF
	ADDED GE 216A5908P001	LEY	03/08	RF
	ECH 01 20080016	LEY	03/08	RF
	1. WAS 0391-00-317-1	RAY	08/07	RF
	2. UPDATED DIMENSIONS	RAY	08/07	RF
	3. UPDATED VIEWS & LEGS	RAY	08/07	RF
	PART NUMBER WAS	JAP	09/13	RF
	PS718-104-CN	JAP	09/13	RF

TITLE: GENERAL ASSEMBLY
HILCO DUPLEX FUEL FILTER

SHEET 1 OF 1
5133-07-009-D